

# Open Frame Solenoid

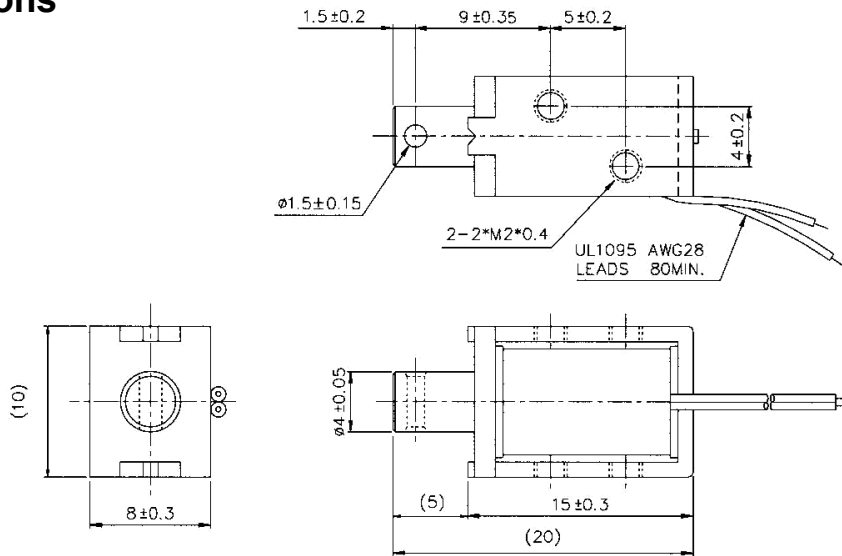
## Pull - SDO 0415L



# NSF

Innovative solutions  
for a changing world

### Dimensions



Solenoid shown in energised position

### General Specifications

**Dielectric Strength:** 1000 VRMS 1 minute

**Insulation Grade:** Class A (105°C) Lead Wire

**Life Expectancy:** Standard Life 500,000 cycles minimum

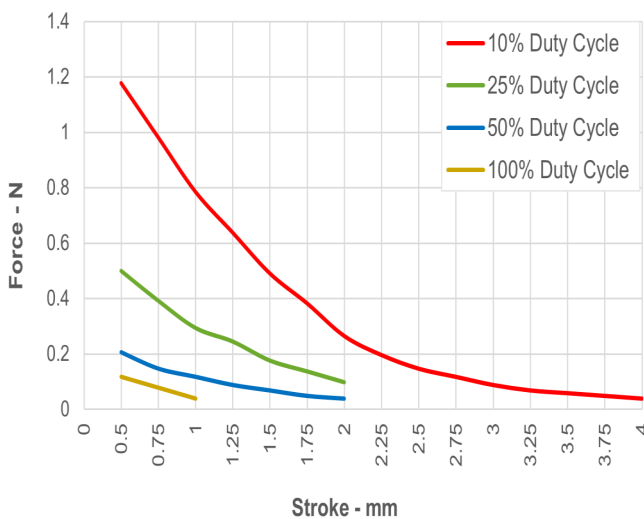
**Operating Temp. Range:** -20°C — +40 °C

**Solenoid Weight:** 5.5g

**Plunger Weight:** 0.7g

### Performance Specifications

Typical Starting Force @ 20°C



### Coil Specifications

Maximum Duty Cycle (%)	Continuous	50%	25%	10%		
MAX. "on" time in seconds	∞	50	18	3		
Watts at 20°C	0.8	1.6	3.2	8		
Ampere-turns at 20°C	130	185	260	415		
Type no.	Resistance (20°C) Ω+10%	No. turns	Volts DC			
SDO-0415L06—	45	975	6	8.5	12	19
SDO-0415L12—	180	1950	12	17	24	38
SDO-0415L24—	720	3900	24	34	48	152

NSF Controls reserves the right to amend specification without prior notice. (Rev 08/21) [www.nsfcontrols.co.uk](http://www.nsfcontrols.co.uk)

NSF Controls Ltd | Ingrow Bridge Works | Keighley | West Yorkshire | BD21 5EF | UK | E: [info@nsfcontrols.co.uk](mailto:info@nsfcontrols.co.uk) | T: +44(0)1535 661144