

# Magnetic Latching Solenoid

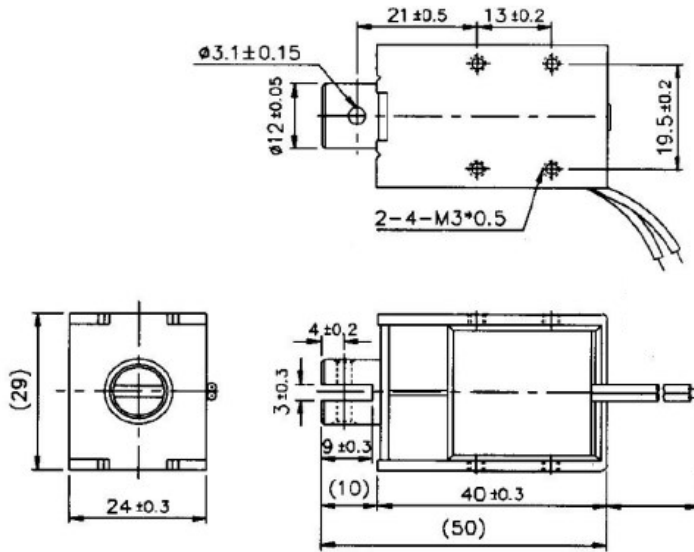
## Pull - SDK 1240L



# NSF

Innovative solutions  
for a changing world

### Dimensions



Solenoid shown in energised position

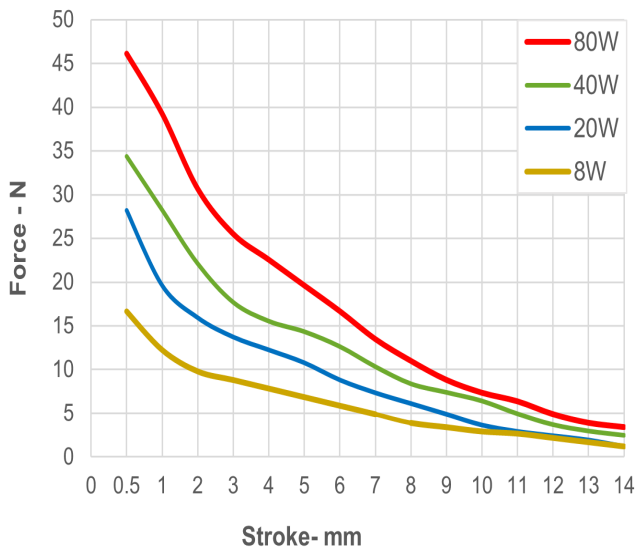
### General Specifications

**Dielectric Strength:** 1000 VRMS 1 minute  
**Insulation Grade:** Class A (105°C) Lead Wire  
**Life Expectancy:** Standard Life 500,000 cycles minimum

**Operating Temp. Range:** - 20°C — +40 °C  
**Solenoid Weight:** 139g  
**Plunger Weight:** 31g

### Performance Specifications

Typical Starting Force @ 20° c



### Coil Specifications

Maximum Duty Cycle (%)	85%	34%	17%	8.5%
MAX. "on" time in seconds	240	50	25	10
Watts at 20°C	8	20	40	80
Ampere-turns at 20°C	685	1080	1530	2160
Type no.	Resistance (20°C) Ω±10%	No. turns	Volts DC	
SDK-1240L5.5—	4.5	510	6	9.5 13.4 19
SDK-1240L11—	18	1070	12	19 26.8 38
SDK-1240L22—	72	2050	24	38 53.7 76

NSF Controls reserves the right to amend specification without prior notice. (Rev 09/22) [www.nsfcontrols.co.uk](http://www.nsfcontrols.co.uk)

NSF Controls Ltd | Ingrow Bridge Works | Keighley | West Yorkshire | BD21 5EF | UK | E:enquiries@nsfcontrols.co.uk | T: +44(0)1535 661144