

# Magnetic Latching Solenoid

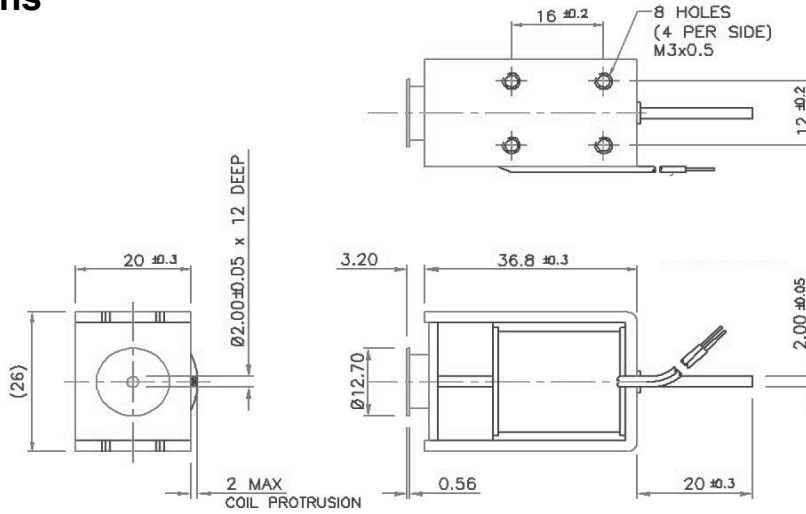
## Pull - SDK 1037L



# NSF

Innovative solutions  
for a changing world

### Dimensions



Solenoid shown in energised position

### General Specifications

Dielectric Strength: 1000 VRMS 1 minute

Insulation Grade: Class A (105°C) Lead Wire

Life Expectancy: Standard Life 500,000 cycles minimum

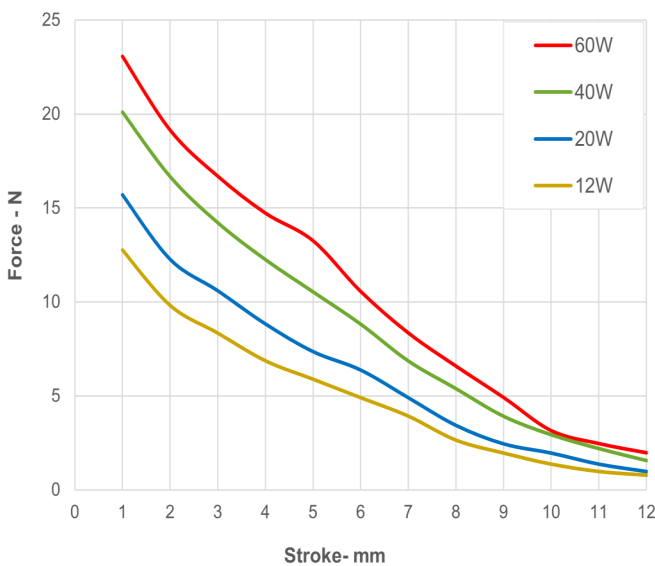
Operating Temp. Range: -20°C — +40 °C

Solenoid Weight: 91g

Plunger Weight: 18.3g

### Performance Specifications

Typical Starting Force @ 20° c



### Coil Specifications

Maximum Duty Cycle (%)	33%	20%	10%	7%		
MAX. "on" time in seconds	150	80	30	24		
Watts at 20°C	12	20	40	60		
Ampere-turns at 20°C	750	970	1376	1675		
Type no.	Resistance (20°C) Ω+10%	No. turns	Volts DC			
SDK-1037L3.5—	3	380	6	7.8	11	13.4
SDK-1037L6.9—	12	750	12	15.5	22	26.8
SDK-1037L13.9—	48	1530	24	31	44	53.7
SDK- 1037L 27.7-	192	2950	48	62	88	107

NSF Controls reserves the right to amend specification without prior notice. (REV 09/22) [www.nsfcontrols.co.uk](http://www.nsfcontrols.co.uk)

NSF Controls Ltd | Ingrow Bridge Works | Keighley | West Yorkshire | BD21 5EF | UK | E:enquiries@nsfcontrols.co.uk | T: +44(0)1535 661144