

Magnetic Latching Solenoid

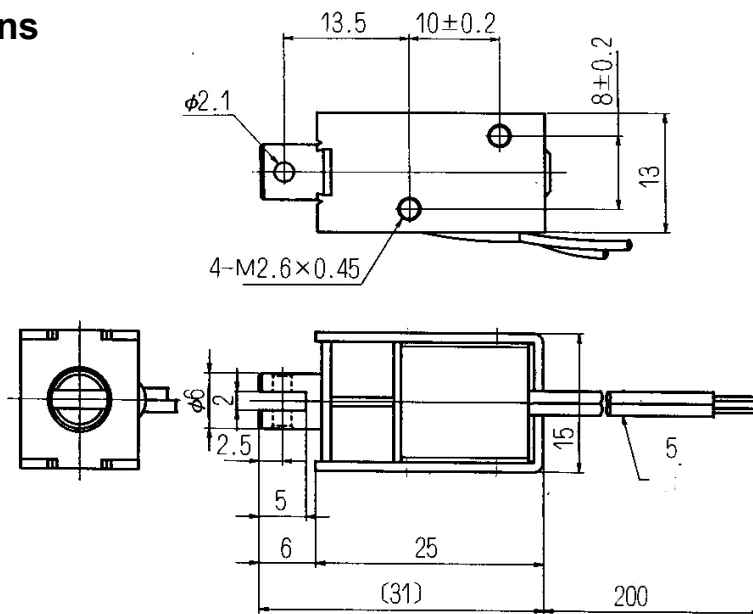
Pull - SDK 0625L



NSF

Innovative solutions
for a changing world

Dimensions



Solenoid shown in energised position

General Specifications

Dielectric Strength: 1000 VRMS 1 minute

Insulation Grade: Class A (105°C) Lead Wire

Life Expectancy: Standard Life 500,000 cycles minimum

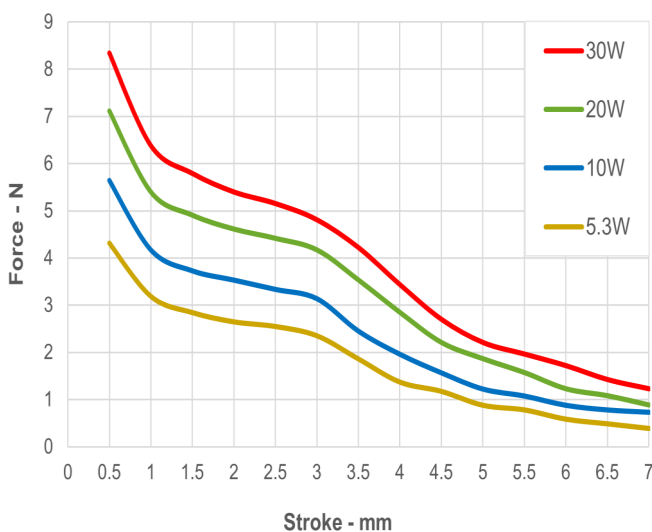
Operating Temp. Range: -20°C — +40 °C

Solenoid Weight: 25.5g

Plunger Weight: 4.6g

Performance Specifications

Typical Starting Force @ 20° c



Coil Specifications

Maximum Duty Cycle	50%	25%	15%	10%		
MAX. "on" time in seconds	60	34	12	7		
Watts at 20°C	5.3	10	20	30		
Ampere-turns at 20°C	436	596	850	1034		
Type no.	Resistance (20°C) Ω±10%	No. turns	Volts DC			
SDK-0625L-6	6.8	520	6	8	12	16
SDK-0625L-12	27	1030	12	16	23	28
SDK-0625L-24	108	1965	24	33	46	57

NSF Controls reserves the right to amend specification without prior notice. (Rev 09/22) www.nsfcontrols.co.uk

NSF Controls Ltd | Ingrow Bridge Works | Keighley | West Yorkshire | BD21 5EF | UK | E:enquiries@nsfcontrols.co.uk | T: +44(0)1535 661144