

HD Rotary Wafer Switch



General Specifications:

This Heavy Duty Indexing mechanism incorporates a metal cam and roller therefore ensuring an extremely robust mechanism which has a positive action. It has been extensively used on switches conforming to DEF 5154 specifications and is recommended for long life, heavy duty applications.

Index Mechanism:

The mechanism may be fitted with index cams to give 30° and 60° switching. Special cams to suit customer requirements can be developed and tooled at moderate cost. Certain cams have been developed and are now available to provide spring biasing over one position either from the fully anti-clockwise position or from the fully clockwise position. A three-position spring return to centre type is also available. Details of other types can be obtained on request. The mechanism is normally supplied unsealed, but may be supplied with spindle and panel seal.

One, or two panel locating pins (3.2mm dia) can be fitted at 15.1mm from the centre of the shaft. On the sealed version these project to a point slightly below the panel mounting face and it is necessary therefore to counterbore the latter to take the mounting boss and drill a blind hole for the locating pin. Where this method cannot be used, e.g. on thin gauge panels, a locating plate (027014) must be welded to the panel into which the pin can locate.

Finish:

Index springs stainless steel, other metal parts passivated zinc plated.

Mounting Details:

| Imperial (standard) | Metric (alternative) |
|---------------------------|----------------------|
| Bush 3/8" x 32 TPI (Whit) | M10 x 0.75 |
| Shaft 0.25" dia | 6 mm dia |
| Nut 0.525" A/F | 14 mm A/F |

The alternative is optional in each case.

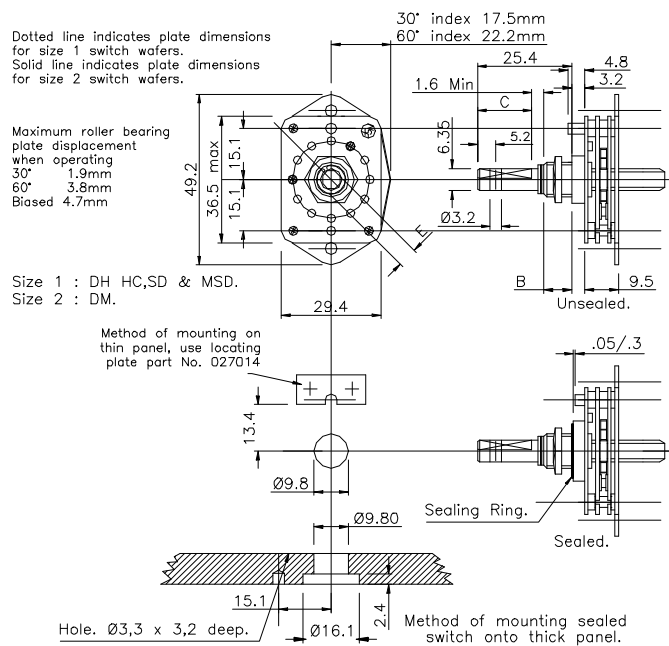
Unless otherwise specified, each switch is supplied with a lock washer.

Panel and spindle seals can be fitted allowing sealing to 1cm³/hr

Spacers:

The minimum dimension shown on the appropriate bulletin data sheet or engineering bulletin for the first spacer should be as follows when using the heavy duty mechanism:

| Type | Lugs Facing Front | Lugs Facing Rear |
|------|-------------------|------------------|
| MK | 1.5mm | 3.0mm |
| MSD | 5.0mm | — |



Dimensions Are In Millimetres

Key To Details

- A Bushing Thread Length:** Preferred standard 9.5, 6.35 (0.250") available as an alternative. Special lengths if necessary.
- B Shaft Length:** Optional ± 0.4 mm
- C Flat Length:** Length to specification; tolerance ± 0.40
Special shaft terminations may be provided to special requirements.
- D Angle of Flat:** To specification $\pm 2^\circ$
Specify position of flat, with switch shaft in **fully anti-clockwise** position when viewed from front or knob end.
- E Flat Thickness:** Standard 5.55 ± 0.15 for grub screws.
 4.95 ± 0.05 for push-on knobs.

Please Note: In line with continued development we reserve the right to amend specification without prior notice (Rev 01/12)

NSF Controls Ltd | Ingrow Bridge Works | Keighley | West Yorkshire | BD21 5EF | UK | Registered in England No. 3378269

T: +44 (0) 1535 661 144 | F: +44 (0) 1535 661 474 | E: info@nsfcontrols.co.uk | www.nsfcontrols.co.uk