

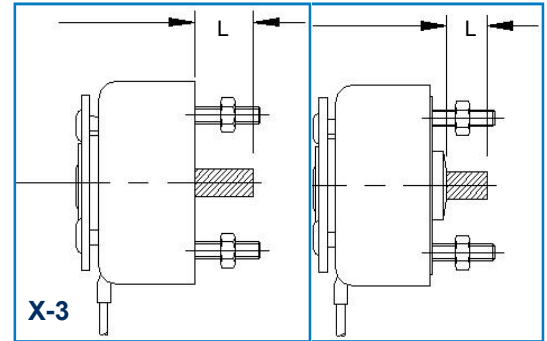
Rotary Solenoid

Configurations: "X Features"

Shaft Extension: Base End: X-3

- Provides facilities for load take-off purposes.
- Non-standard lengths are available subject to special quotation.
- Where scroll type return spring is fitted dimension "L" is measured from the outer face of spring.

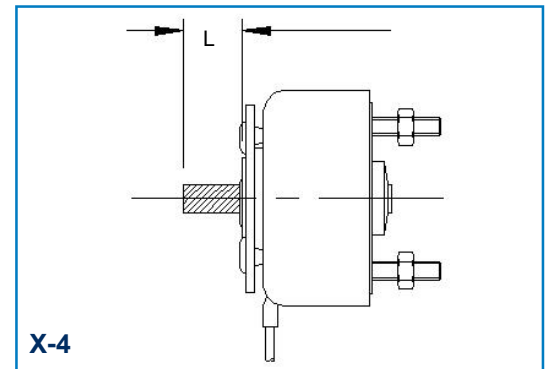
Size	L (mm)	D (ir)	Size	L (mm)	D (ir)
2E	10	13.97	6S or E	13	26.16
3E	10	17.02	7S or E	15.87	29.72
4E	10	20.57			
5S or E	10	22.35			



Shaft Extension: Armature End: X-4

- Provides facilities for load take-off purposes opposite the mounting surface.
- Non-standard lengths are available subject to special quotation.

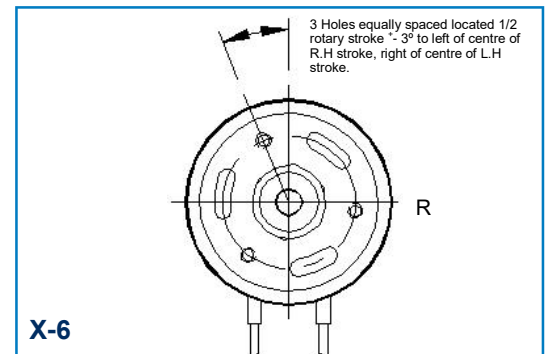
Size	L (mm)	(mm)	Size	L (mm)	(mm)
2E	13 +/- 0.4	13.97	6S or E	16 +/- 0.4	26.16
3E	13 +/- 0.4	17.02	7S or E	18.85 +/- 0.4	29.72
4E	13 +/- 0.4	20.57			
5S or E	13 +/- 0.4	22.35			



Tapped Attachment Hole: X-6

- Provide facilities for attaching a cam, or lever, to the armature plate.

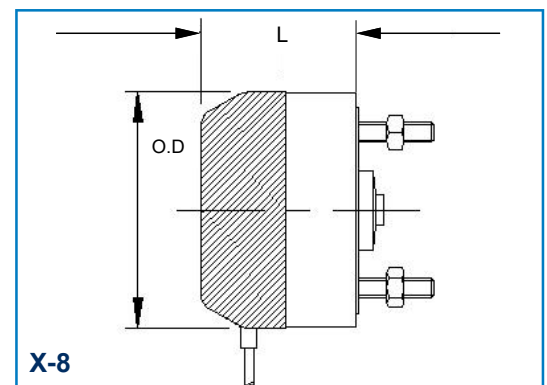
Size	R (mm)	Thread	Size	L (mm)	Thread
2E	9.65	M2.5 x 0.45	6S or E	19.05	M4 x 0.7
3E	11.18	M2.5 x 0.45	7S or E	23.81	M5 x 0.8
4E	13.46	M3 x 0.5			
5S or E	14.22	M3 x 0.5			



Armature Plate Cover: X-8

- Protects the ball bearing, ball races, etc, from dust and dirt.
- A felt seal is provided when this feature is employed together with the X-4 shaft extension.

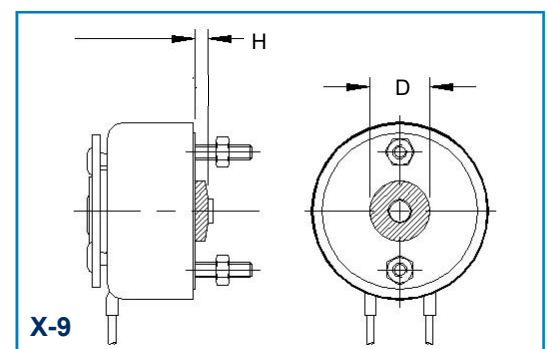
Size	O.D (mm)	L (mm)	Size	O.D (mm)	L (mm)
2E	29.36	18.26	6S or E	58.72	36.12 / 41.27
3E	34.14	22.48	7S or E	69.85	47.22 / 53.97
4E	40.87	26.80			
5S or E	48.82	28.17 / 32.13			



Scroll Type Return Spring: X-9

- A compact, light duty, return spring.
- Although this type of spring is capable of returning light loads, its primary purpose is to return the armature to the starting position independently of the main load.

Size	H (mm)	D (mm)	Size	H (mm)	D (mm)
2E	4	13.97	6S or E	6.35	26.16
3E	4.11	17.02	7S or E	7.87	29.72
4E	4.83	20.57			
5S or E	5.08	22.35			



Please Note: In line with continued development we reserve the right to amend specification without prior notice (Rev 05/16)

NSF Controls Ltd | Ingrow Bridge Works | Keighley | West Yorkshire | BD21 5EF | UK | Registered in England No. 3378269

T: +44 (0) 1535 661 144 | F: +44 (0) 1535 661 474 | E: info@nsfcontrols.co.uk | www.nsfcontrols.co.uk